

OPERATING PARAMETERS

ApolloPress® fittings & valves must be installed using ASTM B88 compliant tubing Types K, L, M hard copper (1/2" to 4") or soft drawn annealed (1/2" to 1-1/4").

- Sealing Element: **EPDM**
- Maximum Operating Pressure: **300 PSI**
- Temperature: Range **0°F to 250°F**

COMPLIANT WITH

- ASME B16.51
- ICC-ES LC 1002
- Uniform Plumbing Code® (UPC)
- International Plumbing Code® (IPC)
- International Residential Code® (IRC)
- National Standard Plumbing Code (NSPC)
- National Plumbing Code of Canada

CERTIFICATIONS/ LISTINGS

- IAPMO PS-117
- CSA TIL-MSE 13
- NSF/ANSI 61
- NSF/ANSI 372

APPROVED APPLICATIONS

TYPES OF SERVICE	SYSTEM OPERATING CONDITIONS COMMENTS	PRESSURE	TEMPERATURE	EPDM O-RING
FLUIDS AND WATER				
Hot & Cold Potable Water		300PSI	0°F - 250°F	✓
Rainwater Gray Water		300PSI	0°F - 250°F	✓
Chilled Water	Ethylene Propylene Glycol	300PSI	0°F - 250°F	✓
Hydronic Heating	Ethylene Propylene Glycol	300PSI	0°F - 250°F	✓
Cooling Water	40-90% Ethylene Glycol or Propylene Glycol Solution	200PSI	32°F - 250°F	✓
Low-Pressure Steam		Up to 15PSI	248°F	✓
FUEL, OIL & LUBRICANT				
Ethanol	Pure Grain Alcohol	200PSI	32°F - 250°F	✓
GASES				
Compressed Air	Less than .025 PPB	200PSI	32°F - 250°F	✓
Oxygen - O ₂ (Non-Medical)		140PSI	up to 140°F	✓
Nitrogen - N ₂		200PSI	32°F - 250°F	✓
Carbon Dioxide - CO ₂		200PSI	32°F - 250°F	✓
Argon - Ar		200PSI	Ambient	✓
Hydrogen - H ₂		125PSI	0°F - 250°F	✓
Vacuum		29.2 in Hg	0°F - 160°F	✓

Consult Apollo Technical Support for information on applications not listed and/or outside the temperature ranges listed above.

UNDERGROUND INSTALLATIONS

When permitted by state and local codes ApolloPress® fittings are approved for use in underground installations. When buried in an area with corrosive soil conditions the fitting must be protected.

FREEZING CONDITIONS

ApolloPress® fittings may be installed in ambient temperatures ranging down to 0°F; properly packaged fittings may be stored in temperatures ranging down to -40°F. Installed tubing systems exposed to freezing conditions must be protected per state and local code requirements and good installation practice.

STANDARD MATERIALS LIST

LARGE DIAMETER FITTINGS

BODY	UNS C12200 Copper
GRAB RING	316/304 Stainless Steel
SPACER RING	Acetal Copolymer
SEALING ELEMENT	EPDM
LUBRICATION	Silicone, ANSI/NSF-61 Listed

SMALL DIAMETER FITTINGS

BODY	UNS C12200 Copper
SEALING ELEMENT	EPDM
LUBRICATION	Silicone, ANSI/NSF-61 Listed

BRASS FITTINGS

BODY	UNS C27451 Brass
SEALING ELEMENT	EPDM
LUBRICATION	Silicone, ANSI/NSF-61 Listed

APPROVED TOOL MANUFACTURERS*

- Milwaukee®
- Ridgid®
- REMS®
- DeWalt®
- NIBCO® (up to 2")
- Rothenberger®
- Stanley-Virax®

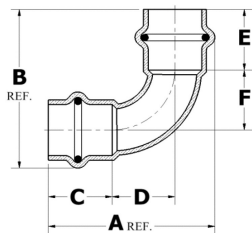
WARRANTY



ELBOWS

90° ELBOW

Model 807, 807R | Small Diameter | P x P



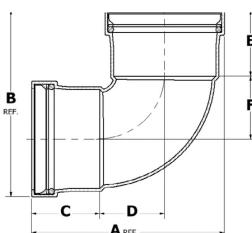
Part No.	Size	A	B	C	D
10075554	1/2"	1.97	1.97	0.75	0.75
10075556	3/4"	2.58	2.58	0.92	1.04
10075052	1"	2.97	2.97	0.92	1.31
10075078	1 1/4"	3.83	3.83	1.09	1.87
10075080	1 1/2"	4.38	4.38	1.31	2.02
10075082	2"	5.38	5.38	1.59	2.52

REDUCING

Part No.	Size	A	B	C	D	E	F
10066101	3/4" x 1/2"	2.58	3.73	0.92	1.04	0.85	2.26
10066083	1" x 3/4"	2.97	4.27	0.92	1.31	0.85	2.68

90° ELBOW – SHORT RADIUS

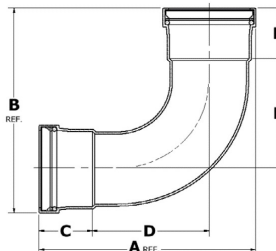
Model 807C | Large Diameter | P x P



Part No.	Size	A	B	C	D
10062021	2 1/2"	5.23	5.23	1.90	1.75
10062027	3"	5.94	5.94	2.10	2.00
10062032	4"	7.44	7.44	2.50	2.59

90° ELBOW – LONG RADIUS

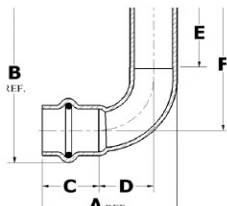
Model 807L | Large Diameter | P x P



Part No.	Size	A	B	C	D
10062066	2 1/2"	6.67	6.67	1.90	3.19
10062067	3"	8.56	8.56	2.10	4.62
10062069	4"	9.75	9.75	2.50	4.90

90° STREET ELBOW

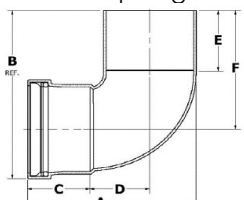
Model 807-2 | Small Diameter | P x FTG



Part No.	Size	A	B	C	D	E	F
10075566	1/2"	1.80	2.38	0.76	0.73	0.97	1.91
10075568	3/4"	2.37	2.82	0.93	1.01	1.06	2.20
10075046	1"	2.88	3.55	0.92	1.40	1.13	2.81
10075072	1 1/4"	3.64	3.84	1.09	1.87	1.19	2.97
10075074	1 1/2"	4.14	4.39	1.31	2.02	1.36	3.34
10075076	2"	5.17	5.49	1.59	2.52	1.65	4.21

90° STREET ELBOW – SHORT RADIUS

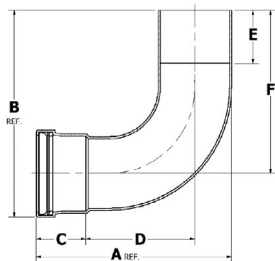
Model 807C-2 | Large Diameter | P x FTG



Part No.	Size	A	B	C	D	E	F
10062007	2 1/2"	4.96	5.54	1.90	1.75	2.03	3.96
10062012	3"	5.66	6.25	2.10	2.00	2.25	4.41
10062017	4"	7.15	7.89	2.50	2.59	2.75	5.54

90° STREET ELBOW – LONG RADIUS

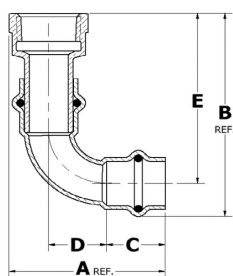
Model 807L-2 | Large Diameter | P x FTG



Part No.	Size	A	B	C	D	E	F
10062071	2½"	6.40	6.92	1.90	3.19	2.26	5.34
10062073	3"	8.28	8.71	2.10	4.62	2.49	6.87
10062074	4"	10.44	10.98	2.50	5.88	2.87	8.63

90° ELBOW – FEMALE

Model 8707-3, 8707R-3 | Small Diameter | P x FPT



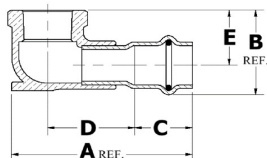
Part No.	Size	A	B	C	D	E
10066560	½"	2.01	2.91	0.76	0.74	2.44
10066561	¾"	2.58	3.54	0.92	1.04	2.92
10066562	1"	2.99	4.07	0.92	1.31	3.33
10066563	1¼"	3.92	4.91	1.09	1.87	4.04
10066564	1½"	4.43	5.63	1.31	2.02	4.58
10066565	2"	5.47	6.60	1.59	2.52	5.32

REDUCING

Part No.	Size	A	B	C	D	E
10066566	½" x ⅜"	1.93	2.76	0.76	0.74	2.29
10066567	½" x ¼"	2.13	3.00	0.76	0.74	2.52
10066568	¾" x ½"	2.47	3.47	0.92	1.04	2.85
10066569	1" x ½"	2.97	3.69	0.92	1.31	2.95

90° ELBOW – DROP EAR

Model 8707-3-5, 8707R-3-5 | Small Diameter | P x FPT



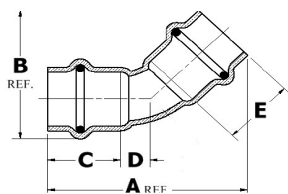
Part No.	Size	A	B	C	D	E
10075366	½"	2.83	1.36	0.85	1.34	0.88
10075368	¾"	3.28	1.64	0.89	1.70	1.02

REDUCING

Part No.	Size	A	B	C	D	E
10075367	½" x ⅜"	2.56	1.18	0.85	1.21	0.71

45° ELBOW

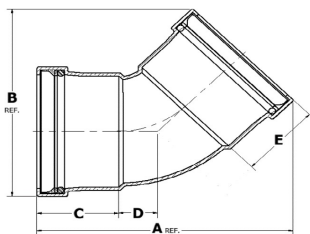
Model 806 | Small Diameter | P x P



Part No.	Size	A	B	C	D
10077670	½"	2.14	1.52	0.78	0.32
10075062	¾"	2.60	1.90	0.92	0.41
10075064	1"	3.10	2.28	0.97	0.59
10075090	1¼"	3.62	2.68	1.09	0.72
10075092	1½"	4.20	3.16	1.31	0.78
10075094	2"	5.24	3.91	1.58	1.02

45° ELBOW

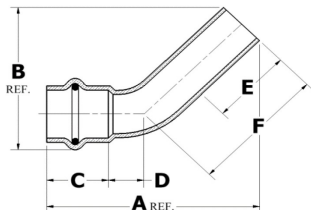
Model 806 | Large Diameter | P x P



Part No.	Size	A	B	C	D
10062052	2½"	5.89	4.66	1.90	0.90
10062057	3"	6.57	5.31	2.10	1.00
10062062	4"	8.10	6.67	2.50	1.27

45° STREET ELBOW

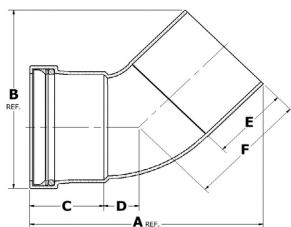
Model 806-2 | Small Diameter | P x FTG



Part No.	Size	A	B	C	D	E	F
10075054	1/2"	2.60	1.89	0.76	0.43	1.00	1.69
10075056	3/4"	2.96	2.25	0.92	0.41	1.38	1.88
10075058	1"	3.23	2.33	0.93	0.71	1.16	1.69
10075084	1 1/4"	3.67	2.73	1.09	0.72	1.19	1.94
10075086	1 1/2"	4.09	3.06	1.31	0.78	1.16	2.02
10075088	2"	5.29	3.95	1.58	1.06	1.65	2.72

45° STREET ELBOW

Model 806-2 | Large Diameter | P x FTG

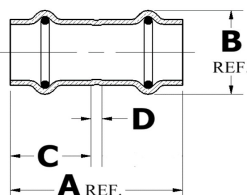


Part No.	Size	A	B	C	D	E	F
10062037	2 1/2"	5.97	4.74	1.90	0.91	2.33	3.16
10062042	3"	6.62	5.36	2.10	1.00	2.48	3.41
10062047	4"	8.18	6.74	2.50	1.51	2.87	4.34

COUPLINGS

COUPLING

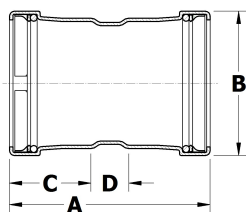
Model 800 | Small Diameter | P x P



Part No.	Size	A	B	C	D
10075500	1/2"	1.72	0.95	0.81	0.11
10075502	3/4"	1.89	1.24	0.88	0.13
10075504	1"	2.06	1.49	0.92	0.23
10077698	1 1/4"	2.20	1.74	1.03	0.14
10077699	1 1/2"	3.00	2.11	1.43	0.14
10077000	2"	3.30	2.58	1.58	0.14

COUPLING

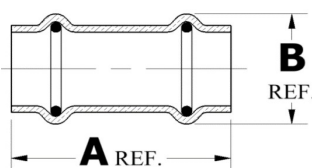
Model 800 | Large Diameter | P x P



Part No.	Size	A	B	C	D
10077701	2 1/2"	4.75	3.16	1.90	0.95
10077702	3"	5.18	3.67	2.10	0.98
10077703	4"	6.06	4.67	2.50	1.06

COUPLING - NO STOP

Model 801, 801L | Small Diameter | P x P



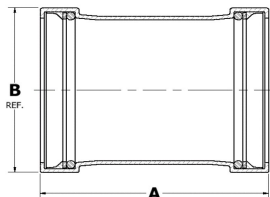
Part No.	Size	A	B
10075513	1/2"	1.72	0.95
10075515	3/4"	1.89	1.24
10075517	1"	2.07	1.49
10077695	1 1/4"	2.20	1.74
10077696	1 1/2"	2.99	2.11
10077697	2"	3.31	2.58

EXTENDED

Part No.	Size	A	B
10075030	1/2"	3.30	0.95
10075032	3/4"	3.00	1.24
10075034	1"	3.58	1.49

COUPLING – NO STOP

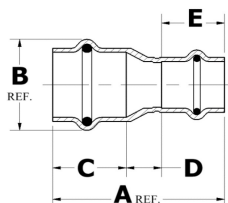
Model 801 | Large Diameter | P x P



Part No.	Size	A	B
10061932	2½"	4.33	3.16
10061937	3"	4.65	3.68
10061942	4"	5.53	4.70

COUPLING – REDUCING

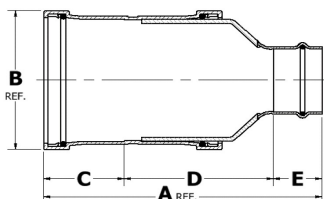
Model 801R | Small Diameter | P x P



Part No.	Size	A	B	C	D	E
10075900	¾" x ½"	2.14	1.24	0.92	0.44	0.79
10075144	1" x ½"	2.45	1.49	0.97	0.64	0.85
10075898	1" x ¾"	2.30	1.49	0.98	0.39	0.93
10066001	1¼" x ¾"	3.98	1.74	1.04	2.09	0.85
10075896	1¼" x 1"	2.41	1.74	1.06	0.38	0.97
10066381	1½" x ¾"	4.79	2.11	1.43	2.47	0.89
10066003	1½" x 1"	4.50	2.11	1.43	2.14	0.93
10075128	1½" x 1¼"	2.87	2.11	1.20	0.63	1.04
10066398	2" x ¾"	5.60	2.58	1.58	3.13	0.89
10066005	2" x 1"	5.39	2.58	1.58	2.84	0.97
10066072	2" x 1¼"	5.06	2.58	1.58	2.44	1.04
10075130	2" x 1½"	3.72	2.55	1.51	0.91	1.31

COUPLING – REDUCING

Model 801R | Large Diameter | P x P

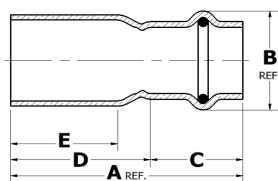


Part No.	Size	A	B	C	D	E
10066440	2½" x 1"	6.73	3.16	1.90	3.86	0.97
10066074	2½" x 2"	6.77	3.16	1.90	3.36	1.51
10066446	3" x 2"	7.14	3.68	2.10	3.53	1.51
10066076	3" x 2½"	7.65	3.68	2.10	3.65	1.90
10066447	4" x 2"	8.64	4.70	2.50	4.63	1.51
10066152	4" x 3"	8.94	4.70	2.50	4.34	2.10

FITTING REDUCERS

FITTING REDUCER

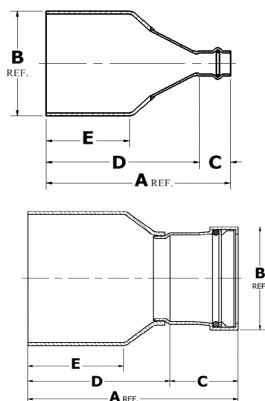
Model 818 | Small Diameter | FTG x P



Part No.	Size	A	B	C	D	E
10075146	¾" x ½"	2.07	0.95	0.85	1.22	0.98
10075150	1" x ½"	2.41	1.25	0.85	1.56	1.10
10075148	1" x ¾"	2.22	1.24	0.85	1.37	1.09
10075336	1¼" x ½"	2.83	1.38	0.85	1.98	1.27
10075154	1¼" x ¾"	2.69	1.38	0.85	1.84	1.34
10075156	1¼" x 1"	2.55	1.50	0.97	1.58	1.32
10075334	1½" x ¾"	3.22	1.62	0.89	2.33	1.55
10075158	1½" x 1"	2.93	1.63	0.93	2.00	1.53
10075160	1½" x 1¼"	2.69	1.74	1.04	1.65	1.31
10075338	2" x ½"	4.04	2.12	0.85	3.19	1.78
10075340	2" x ¾"	3.88	2.12	0.89	2.99	1.83
10075162	2" x 1"	3.67	2.12	0.97	2.70	1.83
10075152	2" x 1¼"	3.34	2.12	1.04	2.30	1.60
10075164	2" x 1½"	3.51	2.12	1.31	2.20	1.77

FITTING REDUCER

Model 818 | Large Diameter | FTG x P

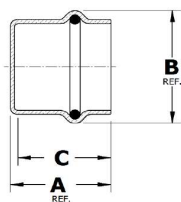


Part No.	Size	A	B	C	D	E
10068001	2½" x ¾"	4.52	2.63	0.89	3.63	2.14
10068002	2½" x 1"	4.44	2.63	0.97	3.47	2.14
10068017	2½" x 1¼"	4.23	2.63	1.04	3.19	2.14
10068004	2½" x 1½"	4.24	2.63	1.31	2.93	2.14
10075165	2½" x 2"	4.36	2.63	1.51	2.85	2.29
10068019	3" x ¾"	4.81	3.13	0.89	3.92	2.27
10068008	3" x 1¼"	4.52	3.13	1.04	3.48	2.27
10068020	3" x 1½"	4.53	3.13	1.31	3.22	2.27
10068010	3" x 2"	4.61	3.13	1.51	3.10	2.26
10068022	4" x ¾"	5.86	4.13	0.89	4.97	2.80
10068016	4" x 2"	5.64	4.13	1.51	4.13	2.76
10057500	3" x 2½"	5.09	3.16	1.90	3.19	2.51
10057503	4" x 2½"	5.87	4.13	1.90	3.97	2.67
10057506	4" x 3"	5.91	4.13	2.10	3.81	2.65

CAPS

TUBE CAP

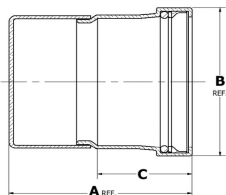
Model 817 | Small Diameter | P x CAP



Part No.	Size	A	B	C
10077850	½"	0.91	0.95	0.75
10077851	¾"	1.14	1.23	1.05
10077852	1"	1.19	1.48	1.10
10075172	1¼"	1.53	1.74	1.09
10075174	1½"	1.80	2.11	1.22
10075176	2"	2.15	2.55	1.51

TUBE CAP

Model 817 | Large Diameter | P x CAP

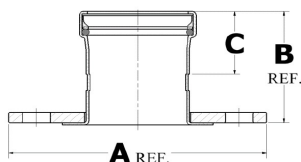


Part No.	Size	A	B	C
10062142	2½"	3.64	3.16	1.90
10062147	3"	4.07	3.68	2.10
10062152	4"	4.96	4.70	2.50

FLANGE ADAPTERS

FLANGE ADAPTER – ANSI CLASS 125

Model 8741 | Small & Large Diameter | P x Flange (BP:4)

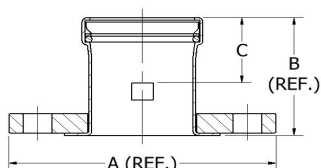


Part No.	Size	A	B	C
10075702	2"	6.00	3.37	1.59
10061761	2½"	7.00	3.62	1.90
10061767	3"	7.50	3.75	2.10
10061736	4"	9.00	3.82	2.50

Note: Bolt Pattern for 4" Flange = BP:8

FLANGE ADAPTER – ANSI CLASS 150

Model 8771 | Large Diameter | P x Flange (BP:4)



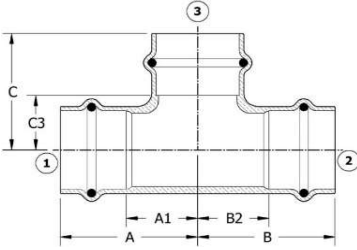
Part No.	Size	A	B	C
10061763	2½"	7.00	3.62	1.90
10061769	3"	7.50	3.75	2.10
10061738	4"	9.00	3.82	2.50

Note: Bolt Pattern for 4" Flange = BP:8

TEES

TEE

Model 811, 811R, 811BH | Small Diameter | P x P x P



Part No.	Size	A	A1	B	B2	C	C3
10077739	1/2"	1.50	0.75	1.50	0.75	1.25	0.50
10077740	3/4"	1.75	0.85	1.75	0.85	1.49	0.59
10077741	1"	1.87	0.97	1.87	0.97	1.69	0.79
10077742	1 1/4"	2.05	1.02	2.05	1.02	1.89	0.86
10077743	1 1/2"	2.56	1.13	2.56	1.13	2.56	1.13
10077744	2"	2.95	1.37	2.95	1.37	2.95	1.37

REDUCING

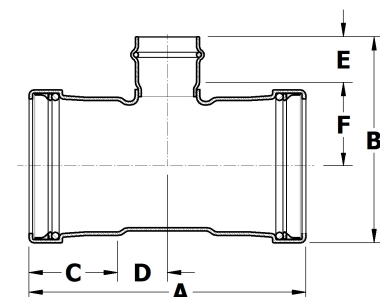
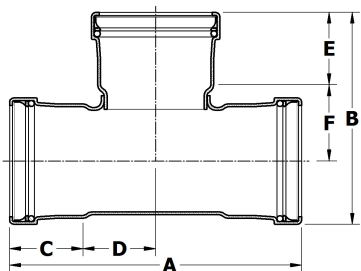
Part No.	Size	A	A1	B	B2	C	C3
10077810	1/2" x 1/2" x 3/4"	1.71	0.96	1.71	0.96	1.49	0.59
10077784	3/4" x 1/2" x 1/2"	1.59	0.69	1.73	0.98	1.38	0.63
10077785	3/4" x 1/2" x 3/4"	1.75	0.85	1.89	1.14	1.49	0.59
10077745	3/4" x 3/4" x 1/2"	1.59	0.69	1.59	0.69	1.38	0.63
10066071	3/4" x 3/4" x 1"	3.19	2.34	3.19	2.34	0.74	0.79
10077786	1" x 1/2" x 3/4"	1.75	0.85	1.99	1.24	1.65	0.75
10077787	1" x 1/2" x 1"	1.87	0.97	2.27	1.52	1.69	0.79
10077788	1" x 3/4" x 1/2"	1.59	0.69	1.85	0.95	1.54	0.79
10077789	1" x 3/4" x 3/4"	1.75	0.85	2.00	1.10	1.65	0.75
10077790	1" x 3/4" x 1"	1.87	0.97	2.08	1.18	1.68	0.78
10077746	1" x 1" x 1/2"	1.59	0.69	1.59	0.69	1.54	0.79
10077747	1" x 1" x 3/4"	1.75	0.85	1.75	0.85	1.65	0.75
10077791	1 1/4" x 1/2" x 1 1/4"	2.05	1.02	2.52	1.77	1.90	0.87
10077792	1 1/4" x 3/4" x 3/4"	1.79	0.76	2.20	1.30	1.77	0.87
10077793	1 1/4" x 3/4" x 1"	1.91	0.88	2.30	1.40	1.81	0.91
10077794	1 1/4" x 3/4" x 1 1/4"	2.05	1.02	2.44	1.54	1.89	0.86
10077795	1 1/4" x 1" x 1/2"	1.67	0.64	1.81	0.91	2.55	0.93
10077796	1 1/4" x 1" x 3/4"	1.79	0.76	2.04	1.14	1.79	0.89
10077797	1 1/4" x 1" x 1"	1.91	0.88	2.18	1.28	1.81	0.91
10077748	1 1/4" x 1 1/4" x 1/2"	1.68	0.65	1.68	0.65	1.68	0.93
10077749	1 1/4" x 1 1/4" x 3/4"	1.80	0.77	1.80	0.77	1.79	0.89
10077750	1 1/4" x 1 1/4" x 1"	1.91	0.88	1.91	0.88	1.80	0.90
10066397	1 1/2" x 3/4" x 1"	2.17	0.74	3.96	3.07	2.08	1.18
10077798	1 1/2" x 1" x 3/4"	2.10	0.67	2.29	1.39	2.06	1.16
10077799	1 1/2" x 1" x 1"	2.17	0.74	2.44	1.54	1.96	1.06
10066081	1 1/2" x 1" x 1 1/4"	2.29	0.86	3.79	2.86	2.17	1.14
10077800	1 1/2" x 1" x 1 1/2"	2.56	1.13	2.73	1.83	2.56	1.13
10077801	1 1/2" x 1 1/4" x 3/4"	2.10	0.67	2.11	1.08	2.05	1.15
10077802	1 1/2" x 1 1/4" x 1"	2.17	0.74	2.32	1.29	2.08	1.18
10077803	1 1/2" x 1 1/4" x 1 1/4"	2.29	0.86	2.36	1.33	2.16	1.13
10077751	1 1/2" x 1 1/2" x 1/2"	1.90	0.47	1.90	0.47	1.85	1.10
10077752	1 1/2" x 1 1/2" x 3/4"	2.09	0.66	2.09	0.66	2.04	1.14
10077753	1 1/2" x 1 1/2" x 1"	2.17	0.74	2.17	0.74	2.08	1.18
10077754	1 1/2" x 1 1/2" x 1 1/4"	2.29	0.86	2.29	0.86	2.16	1.13
10066090	1 1/2" x 1 1/2" x 2"	4.88	3.57	4.88	3.57	1.28	1.37
10066197	2" x 1" x 1 1/2"	2.72	1.14	4.80	3.83	2.80	1.37
10066018	2" x 1" x 2"	2.95	1.37	5.03	4.06	2.95	1.37
10077804	2" x 1 1/4" x 1 1/4"	2.52	0.94	2.87	1.87	2.36	1.33
10066125	2" x 1 1/4" x 1 1/2"	2.72	1.14	4.48	3.44	2.80	1.37
10066064	2" x 1 1/4" x 2"	2.95	1.37	4.71	3.67	2.95	1.37
10077805	2" x 1 1/2" x 3/4"	2.28	0.70	2.77	1.34	2.28	1.38
10077806	2" x 1 1/2" x 1"	2.40	0.82	2.96	1.53	2.28	1.38
10077807	2" x 1 1/2" x 1 1/4"	2.52	0.94	2.98	1.55	2.52	1.49
10077808	2" x 1 1/2" x 1 1/2"	2.71	1.13	3.15	1.71	2.80	1.37
10077809	2" x 1 1/2" x 2"	2.96	1.38	3.44	2.01	2.96	1.38
10077755	2" x 2" x 1/2"	2.13	0.55	2.13	0.55	2.05	1.30
10077756	2" x 2" x 3/4"	2.37	0.79	2.37	0.79	2.16	1.26
10077757	2" x 2" x 1"	2.49	0.91	2.49	0.91	2.20	1.30
10077758	2" x 2" x 1 1/4"	2.62	1.04	2.62	1.04	2.40	1.37
10077759	2" x 2" x 1 1/2"	2.72	1.14	2.72	1.14	2.80	1.37

SUBMITTAL PACKAGE

COPPER PRESS FITTINGS

TEE

Model 811, 811R, 811BH | Large Diameter | P x P x P



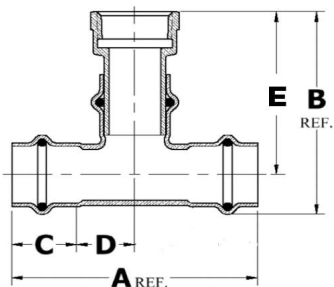
Part No.	Size	A	B	C	D	E	F
10077760	2½"	7.46	5.42	1.90	1.83	1.90	1.94
10077761	3"	8.34	6.15	2.10	2.07	2.10	2.21
10077762	4"	10.20	7.56	2.50	2.60	2.50	2.72

REDUCING

Part No.	Size	A	B	C	D	E	F
10066515	2½" x 2" x 3"	13.41	6.18	1.90	5.06	2.10	4.94
10077763	2½" x 2½" x ½"	5.62	3.95	1.90	0.91	0.85	1.52
10077764	2½" x 2½" x ¾"	5.62	4.05	1.90	0.91	0.89	1.58
10077765	2½" x 2½" x 1"	5.88	4.32	1.90	1.04	0.97	1.77
10077766	2½" x 2½" x 1¼"	6.12	4.43	1.90	1.16	1.09	1.76
10077767	2½" x 2½" x 1½"	6.40	4.67	1.90	1.30	1.31	1.78
10077768	2½" x 2½" x 2"	6.88	4.91	1.90	1.54	1.59	1.75
10066604	3" x 2" x 2"	10.42	5.59	2.10	1.87	1.59	4.94
10066136	3" x 2½" x 2½"	10.94	5.90	2.10	1.88	1.90	5.06
10077769	3" x 3" x ½"	6.06	4.44	2.10	0.93	0.85	1.76
10077770	3" x 3" x ¾"	6.06	4.52	2.10	0.93	0.89	1.80
10077771	3" x 3" x 1"	6.32	4.82	2.10	1.06	0.97	2.02
10077772	3" x 3" x 1¼"	6.56	4.93	2.10	1.18	1.09	2.01
10077773	3" x 3" x 1½"	6.84	5.17	2.10	1.32	1.31	2.03
10077774	3" x 3" x 2"	7.32	5.42	2.10	1.56	1.59	2.00
10077775	3" x 3" x 2½"	7.90	5.89	2.10	1.85	1.90	2.15
10077776	4" x 4" x ½"	7.16	5.42	2.50	1.08	0.85	2.24
10077777	4" x 4" x ¾"	7.16	5.54	2.50	1.08	0.89	2.32
10077778	4" x 4" x 1"	7.72	5.82	2.50	1.36	0.97	2.52
10077779	4" x 4" x 1¼"	7.72	5.92	2.50	1.36	1.09	2.50
10077780	4" x 4" x 1½"	7.72	6.16	2.50	1.36	1.31	2.52
10077781	4" x 4" x 2"	8.18	6.45	2.50	1.59	1.59	2.53
10077782	4" x 4" x 2½"	8.78	6.89	2.50	1.89	1.90	2.65
10077783	4" x 4" x 3"	9.22	7.13	2.50	2.11	2.10	2.69

TEE - FEMALE

Model 8712, 8712R | Small Diameter | P x P x FPT



Part No.	Size	A	B	C	D	E
10066579	½"	3.00	2.69	0.75	0.75	2.21
10066580	¾"	3.50	3.21	0.90	0.85	2.50

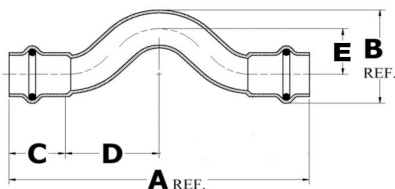
REDUCING

Part No.	Size	A	B	C	D	E
10066581	¾" x ¾" x ½"	3.18	2.96	0.90	0.69	2.34
10066582	1" x 1" x ½"	3.18	3.25	0.90	0.69	2.50
10066583	1" x 1" x ¾"	3.50	3.40	0.90	0.85	2.66
10066584	1¼" x 1¼" x ½"	3.60	3.61	1.03	0.77	2.73
10066585	1¼" x 1¼" x ¾"	3.60	3.67	1.03	0.77	2.80
10066586	1½" x 1½" x ½"	4.18	4.04	1.43	0.66	2.98
10066587	1½" x 1½" x ¾"	4.18	4.10	1.43	0.66	3.05
10066588	2" x 2" x ½"	4.26	4.30	1.58	0.55	3.01
10066589	2" x 2" x ¾"	4.74	4.46	1.58	0.79	3.17

CROSS-OVERS

CROSS-OVER

Model 836 | Small Diameter | P x P

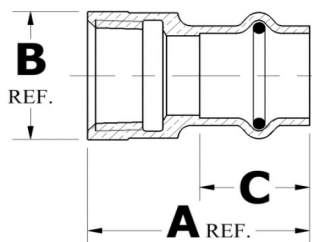


Part No.	Size	A	B	C	D	E
10075370	½"	3.00	2.69	0.75	0.75	2.21
10075372	¾"	3.50	3.21	0.90	0.85	2.50

THREAD ADAPTERS

ADAPTER – FEMALE

Model 803, 803R | Small Diameter | P x FPT



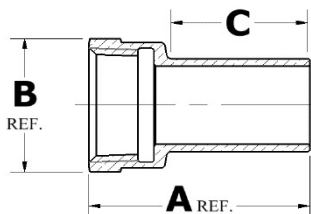
Part No.	Size	A	B	C
10075750	½"	1.52	1.01	0.88
10075752	¾"	1.73	1.25	1.00
10075754	1"	1.76	1.53	0.92
10075756	1¼"	1.90	1.93	1.13
10075758	1½"	2.43	2.20	1.43
10075760	2"	2.61	2.73	1.63

REDUCING

Part No.	Size	A	B	C
10075780	½" x ⅜"	1.34	0.95	0.76
10075782	½" x ¼"	1.62	1.25	0.76
10075784	¾" x ½"	1.50	1.24	0.92
10075796	1" x ½"	1.55	1.49	0.92
10075798	1" x ¾"	1.56	1.49	0.92
10075800	1" x 1¼"	1.96	1.93	0.92
10075786	1¼" x ½"	1.65	1.75	1.04
10075788	1¼" x 1"	1.80	1.75	1.04
10075790	1¼" x 1½"	1.98	2.18	1.04
10075792	1½" x ¾"	2.03	2.09	1.43
10075794	1½" x 1¼"	2.19	2.09	1.43

STREET ADAPTER – FEMALE

Model 803-2, 803R-2 | Small Diameter | FTG x FPT



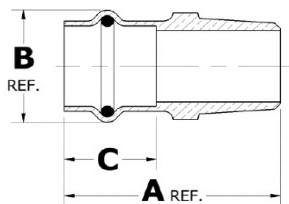
Part No.	Size	A	B	C
10075762	½"	1.85	1.00	1.15
10075768	¾"	2.00	1.25	1.25
10075772	1"	2.03	1.53	1.17
10075774	1¼"	2.19	1.93	1.28
10075776	1½"	2.57	2.18	1.66
10075778	2"	2.78	2.74	1.84

REDUCING

Part No.	Size	A	B	C
10075764	½" x ⅜"	1.66	0.84	1.04
10075766	½" x ¼"	1.80	1.25	1.02
10075770	¾" x ½"	1.84	1.02	1.21
10075804	1" x ½"	1.65	1.13	1.20
10075802	1¼" x ½"	1.87	1.38	1.32

ADAPTER – MALE

Model 804, 804R | Small Diameter | P x MPT



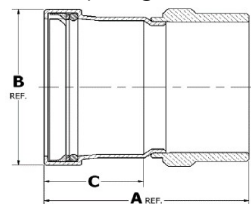
Part No.	Size	A	B	C
10075806	½"	1.92	0.97	0.88
10075808	¾"	2.15	1.26	1.20
10075844	1"	2.39	1.50	1.00
10075810	1¼"	2.39	1.80	1.25
10075812	1½"	2.68	2.13	1.43
10075814	2"	2.97	2.60	1.63

REDUCING

Part No.	Size	A	B	C
10075836	½" x ⅜"	1.79	0.93	0.76
10075838	½" x ¼"	1.86	1.05	0.76
10075840	¾" x ½"	2.21	1.25	0.92
10075842	¾" x 1"	2.40	1.50	0.92
10075854	1" x ¾"	2.24	1.50	0.92
10075856	1" x 1¼"	2.44	1.71	0.92
10075846	1¼" x 1"	2.42	1.71	1.04
10075848	1¼" x 1½"	2.62	1.90	1.04
10075850	1½" x 1¼"	2.73	2.12	1.43
10075852	1½" x 2"	2.85	2.59	1.43
10075858	2" x 1½"	3.10	2.57	1.59

ADAPTER – MALE

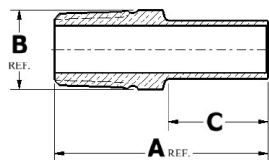
Model 804 | Large Diameter | P x MPT



Part No.	Size	A	B	C
10061982	2½"	4.04	3.16	1.90
10061987	3"	4.29	3.68	2.10
10061992	4"	5.41	4.70	2.50

STREET ADAPTER – MALE

Model 804-2, 804R-2 | Small Diameter | FTG x MPT



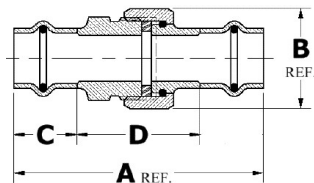
Part No.	Size	A	B	C
10075816	½"	2.38	0.84	1.15
10075822	¾"	2.40	1.05	1.19
10075826	1"	2.50	1.31	1.21
10075828	1¼"	2.60	1.66	1.26
10075830	1½"	3.28	1.90	1.70
10075834	2"	3.46	2.37	1.84

REDUCING

Part No.	Size	A	B	C
10075818	½" x ⅜"	1.99	0.66	1.04
10075820	½" x ¼"	2.42	1.05	1.19
10075824	¾" x ½"	2.31	0.96	1.19
10075832	1" x ¾"	2.55	1.32	1.19

UNION

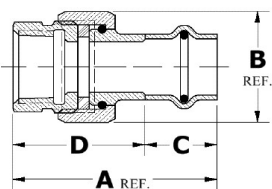
Model 8733 | Small Diameter | P x P



Part No.	Size	A	B	C	D
10075860	½"	2.95	1.17	0.76	1.44
10075862	¾"	3.65	1.42	0.92	1.82
10075864	1"	3.79	1.81	0.92	1.96
10075866	1¼"	3.79	2.04	1.04	1.70
10075868	1½"	3.92	2.28	1.43	1.06
10075870	2"	4.63	2.95	1.59	1.46

UNION – FEMALE

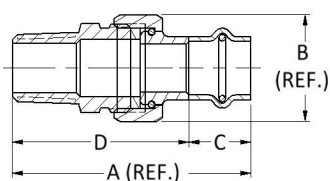
Model 8733-3 | Small Diameter | P x FPT



Part No.	Size	A	B	C	D
10075872	½"	2.10	1.17	0.76	1.34
10075874	¾"	2.84	1.42	0.92	1.92
10075876	1"	2.84	1.81	0.92	1.92
10075878	1¼"	3.12	2.04	1.04	2.08
10075880	1½"	3.05	2.28	1.43	1.62
10075882	2"	3.31	2.95	1.59	1.72

UNION – MALE

Model 8733-4 | Small Diameter | P x MPT



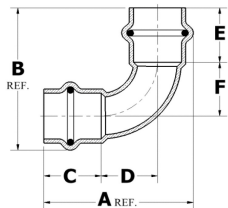
Part No.	Size	A	B	C	D
10075884	½"	2.86	1.17	0.76	2.10
10075886	¾"	3.38	1.42	0.92	2.46
10075888	1"	3.71	1.81	0.92	2.79
10075890	1¼"	3.73	2.04	1.04	2.69
10075892	1½"	3.69	2.28	1.43	2.26
10075894	2"	4.20	2.95	1.59	2.61

SUPPLEMENTAL ITEMS

Note: Supplemental items listed below are made in Europe (manufacturer: Aalberts IPS Europe)

90° ELBOW

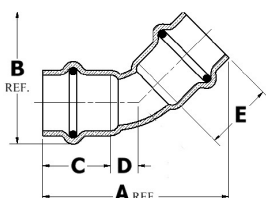
Model 807 | Small Diameter | P x P



Part No.	Size	A	B	C	D
10077676	1/2"	1.97	1.97	0.78	0.72
10077678	3/4"	2.59	2.59	0.91	1.01
10077680	1"	2.98	2.98	0.92	1.32
10077658	1 1/4"	3.54	3.43	0.98	1.69
10077660	1 1/2"	4.47	4.32	1.40	2.03
10077662	2"	5.38	5.24	1.61	2.48

45° ELBOW

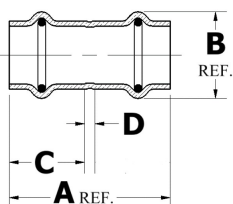
Model 806 | Small Diameter | P x P



Part No.	Size	A	B	C	D
10077682	1/2"	2.13	1.51	0.81	0.28
10077672	3/4"	2.64	1.92	0.91	0.38
10077674	1"	2.91	2.21	0.92	0.53
10077652	1 1/4"	3.06	2.34	0.98	0.49
10077654	1 1/2"	-	-	-	-
10077656	2"	4.84	3.62	1.61	0.75

COUPLING

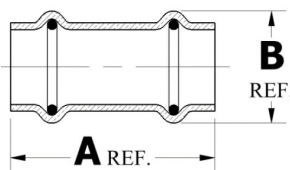
Model 800 | Small Diameter | P x P



Part No.	Size	A	C	D
10077692	1/2"	1.67	0.78	0.11
10077693	3/4"	1.89	0.88	0.13
10077683	1"	2.06	0.92	0.23
10077640	1 1/4"	2.21	0.98	0.27
10077642	1 1/2"	3.31	1.40	0.51
10077644	2"	3.62	1.61	0.39

COUPLING - NO STOP

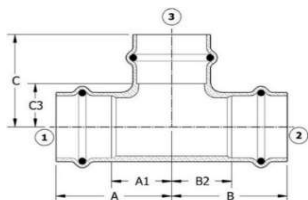
Model 801 | Small Diameter | P x P



Part No.	Size	A
10077691	1/2"	1.72
10077694	3/4"	1.85
10077687	1"	2.06
10077646	1 1/4"	2.21
10077648	1 1/2"	3.31
10077650	2"	3.62

TEE

Model 811, 811R | Small Diameter | P x P x P



Part No.	Size	A	A1	B	B2	C	C3
10017739	1/2"	1.50	0.72	1.50	0.72	1.36	0.56
10017740	3/4"	1.75	0.81	1.75	0.81	1.59	0.64
10017741	1"	1.87	0.96	1.87	0.96	1.83	0.92
10017742	1 1/4"	2.05	1.02	2.05	1.02	1.95	0.92
10017743	1 1/2"	-	-	-	-	-	-
10017744	2"	-	-	-	-	-	-

REDUCING

Part No.	Size	A	A1	B	B2	C	C3
10017784	3/4" x 1/2" x 1/2"	1.59	0.65	1.57	0.95	1.50	0.72
10017745	3/4" x 3/4" x 1/2"	1.59	0.65	1.59	0.65	1.50	0.72
10017746	1" x 1" x 1/2"	1.59	0.68	1.59	0.68	1.73	0.95
10017747	1" x 1" x 3/4"	1.75	0.84	1.75	0.84	1.85	0.91